



30 YEARS

# PASCO Picayune

SERVING COLORADO'S DISABILITY COMMUNITY

The Newsletter That Serves its Readers



## INSIDE THIS ISSUE:

Case Management Redesign– Jeffco	2
Resources	3
PASCO Support	4
PASCO Bi-Lingual Team	5
Phamaly Theatre	6
Resources	7
Resources	8
Drive with Confidence	9
Special Fathers Network	10
Be Prepared for Winter	11

PASCO  
CORE VALUES

### ACCOUNTABILITY

### TEAMWORK

### ADVOCACY

### LEARNING

### ETHICS

Reference in this Newsletter to any specific product, service, or company does not constitute a recommendation by PASCO (although we do our best to support community friendly organizations)

## Putting Families First – Wrongful PAR Denials and Delays

We have recently been hearing of instances in which **agencies are putting caregivers on hold because their PAR is delayed or was wrongfully denied**. We want to ensure to our caregivers that no family who has completed all necessary steps for their PAR will have to be without payment due to a wrongful denial or delay.

At PASCO, we pride ourselves on our commitment to prioritizing our families above all else. Some individuals utilizing HCBS waivers are facing incorrect denials or unnecessary holds on their PARs due to the overwhelming workload of case management agencies. These delays can lead to uncertainties and financial strains for our families.

We understand the anxiety that can arise when you've meticulously completed all the necessary paperwork, checked every box, and fulfilled all the requirements to confirm your loved one's eligibility, and the is still a risk of not being paid due to these external issues. We stand by the principle that *if you've done your due diligence, you should be getting paid promptly*.

We look to the new year...2024, with optimism and hope. The passing of time, never so pronounced as the unadorned calendar hung in the kitchen, its blank months soon to be filled with appointments, play dates, away games, daily tasks, and the like. Please help PASCO fill up its robust community calendar, by submitting; events, fundraisers, resource fairs, jubilees, book signings, get-togethers, shindigs, open-houses, special speakers, barn-raising, pancake breakfasts, anniversary parties, celebrations and good old fashioned get togethers. <https://pascohh.com/submit-event/>. For questions or concerns please feel free to reach out.

That's why we've taken proactive steps to alleviate these concerns and provide protections for our families.

We bridge the gap so that you're never left in limbo, anxiously awaiting approvals or the support that you need. We are dedicated to ensuring that your loved ones receive the care, benefits, and support they rightly deserve, precisely when they need it. Instances like this are precisely where our 33 years as a trusted agency become your greatest asset. We have experience weathering storms like this that have affected our families for years. Our longstanding history and deep Medicaid knowledge has allowed us to properly prepare for these delays and ensure that we have your back no matter what external factors may come our way. Your peace of mind is our top priority, and we are here to support you every step of the way. At PASCO, your family is our family, and we are committed to putting your needs first.

## PASCO proudly serves the following counties:



- Adams
- Arapahoe
- Boulder
- Broomfield
- Clear Creek
- Denver
- Douglas
- El Paso
- Elbert
- Gilpin
- Jefferson
- Larimer
- Morgan
- Park
- Weld

And Now PUEBLO!!!

## The Current Landscape

Important changes are coming to case management for Home and Community Based Services (HCBS), the Family Support Services Program, State Supported Living Service (SLS) and Quality Assurance offered by Health First Colorado, Colorado's Medicaid program through the Department of Health Care Policy and Financing (HCPF).

The changes specify that case management for all HCBS waivers, the Family Support Services Program, State SLS, and Quality Assurance functions will soon be provided by a designated Case Management Agency (CMA) in each defined service area of the state.

Jefferson County Human Services (JCHS) is currently the Single-Entry Point (SEP) for Jefferson County and provides case management for various HCBS waivers, not including waiver services for intellectual and developmental disabilities (IDD). JCHS has been designated as the new CMA for Jefferson and Clear Creek County.

Developmental Disability Resource Center (DDRC) is the Community Center Board (CCB) for Jefferson, Clear Creek, Gilpin and Summit Counties and provides case management for various HCBS waivers and State funded services for those with Intellectual and Developmental Disabilities (IDD).

The change will transition case management from DDRC to JCHS, as the new CMA for all IDD HCBS waivers, Family Support Services Program, State SLS and Quality Assurance in Jefferson and Clear Creek Counties. Similarly, this change will also transition case management from DDRC to Garfield County for all IDD HCBS waivers, Family Support Services Program, State SLS, and Quality Assurance in Summit County. Lastly, these same services currently provided by DDRC in Gilpin County will transition to Adult Care Management, Inc.

The transitions will occur between March and July 2024. **You do not need to take any action.** DDRC will work with the new CMA to transition your case management services.

## Why is this changing?

Since 2014, the Colorado Department of Health Care Policy and Financing has worked to come into compliance with a federal law that requires case management be provided by an agency

County	New CMA
Jefferson and Clear Creek Counties	Jefferson County Human Services
Gilpin County	Adult Care Management, Inc. (ACMI)
Summit County	Garfield County Department of Human Services

that is separate from the agency that provides direct service care, called conflict free case management (CFCM). This separation will preclude any possible conflict of interest of an agency that provided both case management and direct service.

The state of Colorado passed legislation to come into compliance with the federal law by implementing [case management redesign](#) (CMRD). This means that DDRC cannot provide both case management and direct services. The state is required to come into compliance with CMRD by June 2024.

## DDRC & Jefferson County Working Together

Jefferson County and DDRC have been working together on CMRD for nearly 3 years with the mutual goal of minimizing any impact these changes may have on the individuals and families we serve, our staff and our community. Individuals and families who receive their case management and resource coordination from DDRC for all IDD HCBS Waivers, State Supported Living Services (SLS) and Family Support Services will be the most impacted by this change. Most individuals and families who currently receive case management from Jefferson County Human Services should experience little change.

Jefferson County is working with DDRC leadership to ensure a smooth transition and anticipates most DDRC staff impacted by this change will be hired as part of the new Jeffco CMA.

DDRC has provided both case management and Home and Community Based Services for nearly 60 years. As a result of these changes DDRC will no longer be providing case management services but will continue to provide their direct services (HCBS Waiver Services, Early Intervention, Behavioral Health, Recreation, etc.). DDRC is here to continue to serve you without interruption through the year and into the future. We will continue to communicate regularly throughout this process.

Members, (people receiving Health First Colorado Medicaid waiver benefits), currently receiving case management, FSSP, State SLS or quality assurance through DDRC will have the option to continue through June 2024. Members currently served by JCHS will not be impacted.

If you have questions about your assigned case management agency, please reach out to DDRC or your DDRC case Manager.

## Upcoming Communications & Updates

You will be receiving updates from DDRC and JCHS. DDRC and JCHS are committed to doing all that we can to help make a smooth transition for the t

Please watch for updates through email, websites, and postal notices. We also anticipate holding open houses and town halls so that the community can help play a part in a smooth transition of services.

**Learn More:** [www.jeffco.us/4656](http://www.jeffco.us/4656)

<https://ddrcco.com/>

<https://hcpf.colorado.gov/case-management-redesign>

**Jefferson  
County**



## The Help Hope Live Advantage

### ONE-ON-ONE SUPPORT

We pair you with a dedicated Client Services Coordinator to help you fundraise.

### NONPROFIT STATUS

We offer your community a convenient, tax-deductible way to donate.

### ONLINE DONATION PAGE

Share your story, collect donations, and receive messages of support through a customizable online campaign page.

### EASY TO SUBMIT BILLS

Once you begin fundraising for Help Hope Live, you are eligible to submit Fund Request Forms to help cover unmet medical needs.

### KEEP YOUR MEDICAID

Because Help Hope Live maintains discretion over the funds you raise, they shouldn't jeopardize your eligibility for asset-based assistance programs. You should check with your state's Medicaid office to be sure.



### OUR MISSION

As a 501(c)(3) national nonprofit, we support community-based fundraising for people with unmet medical expenses and related costs due to cell and organ transplants or catastrophic injuries and illnesses.

Help Hope Live has discretion and control over the use of all donated funds. Donations made in honor of a specific individual, or in response to campaign solicitations, are restricted by region only and do not obligate Help Hope Live to allocate funds toward a specific individual, as the IRS might deem such donations to be private gifts. Clients receive support according to medical and financial need.

### CONNECT WITH US!

2 Radnor Corporate Center, Suite 300  
100 Matsonford Road  
Radnor, PA 19087

800.642.8399 • [helphopelive.org](http://helphopelive.org)



©2023 Help Hope Live

40 YEARS  
Trusted Medical Fundraising



Ranked in the **Top 1%**  
of U.S. charities



You're invited to a

# JOINT OPEN HOUSE

at

**embark & fusion**  
BEHAVIORAL HEALTH

**Wednesday, January 17th, 2024**  
**3:00pm to 4:00pm**

5340 SOUTH QUEBEC STREET  
GREENWOOD VILLAGE, CO 80111  
SUITES 100N & 205N

*Come explore how Embark and Fusion Academy Denver can help support adolescents with their mental health and academics.*

3:00pm- 3:30pm: Option to attend an information session at Embark or tour Fusion Academy Denver  
3:30pm - 4:00pm: Option to attend an information session at Fusion Academy Denver or tour Embark

**Questions? Contact**  
Tiffany Dillon, Director of Clinical Partnerships  
Embark Behavioral Health  
757-403-0528 | [tiffany.dillon@embarkbh.com](mailto:tiffany.dillon@embarkbh.com)  
Emma Kilcullen, Director of Outreach  
Fusion Academy Denver  
301-919-2820 | [ekilcullen@fusionacademy.com](mailto:ekilcullen@fusionacademy.com)

Click the QR code to RSVP

## Start a Campaign

For Help Hope Live to cover the medical expenses insurance doesn't

### YOU ARE NOT ALONE.

Thousands of people each year face significant financial hardship due to a medical crisis. Unexpected expenses related to medical care can add up quickly.

Fundraising can help you pay for these expenses.

### WE ARE HERE TO HELP.

At Help Hope Live, we **HELP** ease the financial burden of a medical crisis, provide **HOPE** at a time of overwhelming need, and support patients and their families to **LIVE** life as fully as possible.

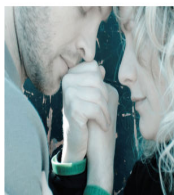
Since 1983, we have helped thousands of people raise millions of dollars to offset the cost of out-of-pocket medical expenses and related costs.

### HOW WE SUPPORT YOU:

- We help you rally your community to raise funds and awareness.
- Provide fiscal accountability for all funds raised.
- Pay bills directly, allowing our clients and their families to focus on treatment and recovery.

## Support for Transplant

Organ • Bone Marrow • Stem Cell • Tissue



## Support for Injury or Illness

SCI • TBI • Muscular Dystrophy • Cerebral Palsy • MS  
• Spina Bifida • Cancer • COVID-19 • Rare Disease



### Help Hope Live funds the following:

- Health insurance premiums, deductibles, and co-pays
- Hospital bills and lab work
- Dental care (related to transplant)
- Travel, food, and lodging for patient and caregiver during temporary relocation for treatment
- Anti-rejection and other medications, which can easily exceed \$2,500 a month
- Emergency assistance for living expenses (mortgage, rent, utilities)
- Follow-up care and rehabilitation
- Caregiver expenses
- And more!

See our website for a full list of covered conditions and expenses.

### Help Hope Live funds the following:

- Health insurance premiums, deductibles, and co-pays
- Rehabilitation and physical therapy
- Home health care
- Home accessibility modifications
- Vehicle modifications and modified vehicles
- Medical equipment and supplies
- Medications
- Assistive technology
- Exoskeletons
- Service dogs
- And more!

**Friday, Feb. 9, 2024**

# Winter Bike to Work Day

Join us for our

## Spina Bifida

**2024 Winter Party**

FOOD - GAMES - SWIMMING  
**SUNDAY, January 28th, 2024**  
**3:30pm- 7:00pm**  
**LOCATION:**  
**Eric Community Center**  
**450 Powers St**  
**Erie, CO 80516**

**RSVP for Event**



800.642.8399

[www.helphopelive.org](http://www.helphopelive.org)

## PASCO Support (for all your employment needs)

If you have questions, we have answers. Contact our helpful Support Team for any assistance with:

- Caregiver and Client contact information changes
- Live-In Caregiver form support
- PASS support (unlocking timesheets, password resets, questions, etc)
- Therap Support
- CareVoyant Support
- Checking status of compliance items
- Medicaid renewal assistance
- Scheduling compliance items (e.g. CPR, Skills Den)
- Remote Learning support (PASCO Connect)
- Changing language preferences
- Employment verification requests
- Help with paystubs
- Questions about a paycheck
- Employee vacation requests
- Direct deposit enrollment/updates
- Financial Assistance program



Something else? Send it to PASCO Support and we'll get you an answer.

### Contact Us

[support@pascohh.com](mailto:support@pascohh.com)

(303) 233-3122 - Ask for Support

<https://pascohh.com/support-form/>

## SPRING 2024 LIVE WEBINAR SERIES

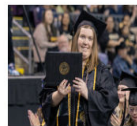


LIVE WEBINARS		DATE & TIME
1	<b>IN! 101 + Applications:</b> Overview inclusive higher education programs in Colorado and take a deeper look at the application process	Wednesday, January 17 5:00-6:00 PM
2	<b>Post-Graduation Outcomes:</b> Review statewide and national data to learn how college can change trajectories of students' futures	Tuesday, February 13 5:00-6:00 PM
3	<b>Levels of Support for College Students with Disabilities:</b> Discuss history of Disability Services and explore various pathways for students with disabilities to find support	Wednesday, March 13 5:00-6:00 PM
4	<b>Graduate Panel:</b> Hear from upcoming graduates about their college experience and what their plans are post-graduation	Thursday, April 18 5:00-6:00 PM
5	<b>IN! 101 + Summer Preparation Strategies:</b> Overview inclusive higher education programs in Colorado and learn about strategies to maintain and build skills during Summer Break	Tuesday, May 14 5:00-6:00 PM

REGISTER IN ADVANCE AT: [INCLUSIVEHIGHERED.ORG/NEWS-EVENTS](https://inclusivehighered.org/news-events)

### QUESTIONS?

Sign up for prospective family office hours or a community resource meeting here:  
<https://calendly.com/eliseinclusivehighered>



### Students with intellectual disabilities are going to college IN COLORADO!

As a non-profit organization, IN! works to raise awareness of the inclusive college options for students with intellectual disabilities (ID) across Colorado via webinars, informational sessions, mentorship opportunities, and more.  
Find out more at [inclusivehighered.org](https://inclusivehighered.org)

	CHECK OUT POPULAR PAST WEBINARS!	LINK
PREPARING FOR COLLEGE	<b>Essential Steps for College Readiness</b>	<a href="https://bit.ly/3QzRHu8">https://bit.ly/3QzRHu8</a>
	<b>Preparing Students with Disabilities for College in Colorado</b>	<a href="https://bit.ly/46cYwaQ">https://bit.ly/46cYwaQ</a>
	<b>Teaching Techniques to Incorporate College Preparation for Students with ID</b>	<a href="https://bit.ly/49EUxGL">https://bit.ly/49EUxGL</a>
4 PILLARS OF INCLUSIVE HIGHER EDUCATION	<b>IN! 101 + Academics</b>	<a href="https://bit.ly/40OBH7V">https://bit.ly/40OBH7V</a>
	<b>IN! 101 + Employment Support</b>	<a href="https://bit.ly/49l9Rm3">https://bit.ly/49l9Rm3</a>
	<b>IN! 101 + Social Engagement</b>	<a href="https://bit.ly/3NeCcac">https://bit.ly/3NeCcac</a>
	<b>IN! 101 + Independence</b>	<a href="https://bit.ly/49YkIwv">https://bit.ly/49YkIwv</a>
COMMUNITY RESOURCES	<b>DVR &amp; Employment Support</b>	<a href="https://bit.ly/3OI9PSd">https://bit.ly/3OI9PSd</a>
	<b>Medicaid Waivers in College</b>	<a href="https://bit.ly/4laEYmH">https://bit.ly/4laEYmH</a>

## STRIVE THRIVE

Tuesday, January 23 from 4:00 to 6:00 p.m.  
Calvary Castle Rock, 1100 Caprice Dr.



### RESOURCE AND SERVICE FAIR

Individuals and families who are struggling are welcome to attend a Resource and Service Fair with representatives from more than 20 different organizations. Enjoy a free, hot meal and access to the following resources:

- ★ Food and nutrition assistance
- ★ Emergency assistance applications
- ★ Free clothing
- ★ Free resources
- ★ Much more







CARDINAL HEALTH/JFS

## Group Supported Employment Job Opportunity

**We are looking to add new employees to our work crew, and we want YOU!**

Cardinal Health is a medical supply provider with a warehouse facility providing medical supply delivery services to the Denver Metro area. Our group worksite is fully integrated into the Cardinal Health work environment. Employees interact daily with non-disabled co-workers and will receive guidance from a qualified job coach every single shift.

### JOB DESCRIPTION

Employees do a variety of tasks including cleaning and preparing totes to be repacked after supply delivery, organizing totes, cleaning, and preparing area for arrival of totes, and using pallet jacks to move totes to various locations around warehouse for packing/delivery. This is a physical job that requires lifting, pushing, stacking, pulling, and standing for the length of shift. Reasonable accommodations are available upon request.

### WHO IS A GOOD FIT?

This program is a good fit for adults with IDD who are working towards a long-term goal of individualized employment and need experience working in an integrated environment that supports job skill development and regular interaction with their non-disabled co-workers.

### WORK SKILL DEVELOPMENT

Worksite Job Coach works with participants on assessing and developing their work skills to assist in improving their employability, social skills, and workplace boundaries which will later assist their transition to seeking a more independent employment setting. This is intended to be a transitional job placement.

### THE DETAILS

- Various days are available Monday - Friday from 8:00 a.m.-2:00 p.m.
- Cardinal Health Warehouse is located at 8440 Concord Dr. in Englewood, CO
- Job Coach support for every shift, for whole shift (including lunchtime & breaks)
- Employees work in a small group with an average of 5 individuals per shift with 1 worksite supervisor.
- Transportation provided for most clients through AAR
- \$13.65 per hour (minimum wage)

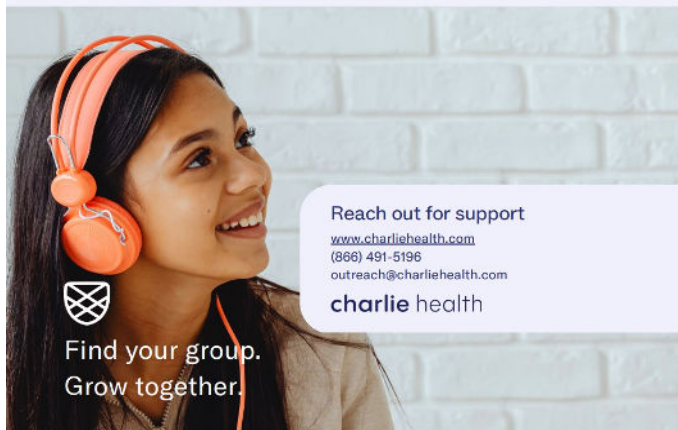
To apply, contact Alexa Feenstra at 720.248.4646 or [afeenstra@jewishfamilyservice.org](mailto:afeenstra@jewishfamilyservice.org)



## Neurodivergent-Affirming Care

Charlie Health's virtual Intensive Outpatient Program (IOP) supports neurodivergent teens and young adults. This program is designed to meet the unique needs of neurodivergent clients who may have autism, ADHD, or another condition under the neurodivergent umbrella. Programming provides a safe and healing space to deal with the secondary stressors that can come with living in a neuro-typical world.

- Curated groups with similar peers
- Affirming, trauma-informed clinicians
- Individual therapy
- Family therapy
- Free parent support group
  - Learn more about how to support and understand your neurodivergent teen or young adult child. Led by neurodivergent-affirming therapists at Charlie Health.

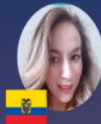


Reach out for support  
[www.charliehealth.com](http://www.charliehealth.com)  
 (866) 491-5196  
[outreach@charliehealth.com](mailto:outreach@charliehealth.com)  
**charlie health**

Find your group.  
Grow together.

## SU EQUIPO BILINGÜE | PASCO

9197 W 6th Ave Suite 1000  
Lakewood, CO 80215  
(303) 233-3133 [pascohh.com](http://pascohh.com)



### Erika Falconi

Especialista de Servicios del Cliente  
 Oficina/Cell: (720) 422-2087  
[erika.falconi@pascohh.com](mailto:erika.falconi@pascohh.com)

### Rebecca Bordner

Gerente de Apoyo al Empleado  
 Oficina: (303) 233-3122 x 371  
[rebecca.bordner@pascohh.com](mailto:rebecca.bordner@pascohh.com)



### Adriana Ramirez

Especialista de Nominas  
 Oficina: (303) 233-3122 x 177  
[adriana.ramirez@pascohh.com](mailto:adriana.ramirez@pascohh.com)

### Ulises Arnold

Coordinador de Recursos Humanos  
 Oficina: (303) 233-3122 x 146  
[ulises.arnold@pascohh.com](mailto:ulises.arnold@pascohh.com)



### Marleny Lopez

Coordinadora de Servicios de Exenciones  
 Oficina/Cell: (303) 704-3096  
[marleny.lopez@pascohh.com](mailto:marleny.lopez@pascohh.com)

### Amber Schenck

Apoyo Administrativa de IDD  
 Oficina: (303) 233-3122 x 190  
[amberschenck@pascohh.com](mailto:amberschenck@pascohh.com)



### Juana Chavez

Coordinadora de Servicios de Exenciones  
 Oficina: (303) 233-3122 x 172  
[juana.chavez@pascohh.com](mailto:juana.chavez@pascohh.com)

### Arely Peña-Reyes

Apoyo Clínico de IDD  
 Oficina: (303) 233-3122 x 149  
[arely.pena-reyes@pascohh.com](mailto:arely.pena-reyes@pascohh.com)



### Michelle Saldaña

Coordinadora de Admisión y Recursos Humanos  
 Oficina: (303) 233-3122 x 214  
[michelle.saldana@pascohh.com](mailto:michelle.saldana@pascohh.com)

### Chelsi Barraza

Coordinadora de Servicios de Exenciones  
 Oficina/Cell: (720) 813-6189  
[chelsi.barraza@pascohh.com](mailto:chelsi.barraza@pascohh.com)



### Janette Garcia

Especialista en Admisión  
 Oficina: (303) 233-3122 x 157  
[janette.garcia@pascohh.com](mailto:janette.garcia@pascohh.com)

### Denise Suarez

Alcance Comunitario  
 Oficina/Cell: (720) 392-3031  
[denise.suarez@pascohh.com](mailto:denise.suarez@pascohh.com)



### Virginia Guerrero

Especialista de Apoyos y Recursos  
 Oficina: (303) 233-3122 x 175  
[virginia.guerrero@pascohh.com](mailto:virginia.guerrero@pascohh.com)

### Luz Rivera

Coordinadora de Servicios de Exenciones  
 Oficina: 303-233-3122 x 143  
[luz.ramirez@pascohh.com](mailto:luz.ramirez@pascohh.com)



Taking great pride in fulfilling our PASCO Promise (Medicaid Made Easy, Together we Thrive, Advocacy for All, Care Through all Ages & Stages, Care for the Caregiver, Collaborative Care) it became apparent that unless we made changes in how we delivered information in one's native language, that we were not living up to our own high standards. Starting in 2022 under CEO Leslee Torres's leadership, a tremendous and intentional overall occurred, whereby every department in the organization has on its team a native Spanish speaker. From Human Resources to Payroll to Intake to Outreach to I/DD Case Management—no more will a person who is far more comfortable speaking in their native Spanish, need to rely on translation (which oftentimes overlooks nuances and subtleties). For other languages, PASCO does its best to work with current employees who can convey the complexities and distinctions in a native tongue. As our friends at The [Community Language Cooperative](#) maintain: Language Justice is a key practice used in social justice movements to create shared power, practice inclusion and dismantle traditional systems of oppression that have traditionally disenfranchised non-English speakers.



# Phamaly THEATRE COMPANY

Denver's premier disability-affirmative theatre, Phamaly Theatre Company, is proud to present its 35<sup>th</sup> Anniversary Season in 2024.

Phamaly's spring performance will be *Miss Holmes* by Christopher M. Walsh. Based on characters by Sir Arthur Conan Doyle. It will take place at Northglenn Arts.

In the summer, Phamaly will make their return to the Denver Center for the Performing Arts Kilstrom Theatre with *A Chorus Line*! Music is by Marvin Hamlisch, lyrics by Edward Kleban, and the book is by James Kirkwood Jr. and Nicholas Dante.

For the first time in its history, Phamaly will run two performances in reparatory in the fall at The People's Building. The first will be *Funny As A Crutch* by Rich Orloff and the second will be *The Mamalogues* by Lisa B. Thompson.

"A theatre, not only surviving but thriving, for 35 years is virtually unheard of," states Ben Raanan, Artistic Director. "Throughout its years, Phamaly has developed its own brand of art that pushes the boundaries of theatre and disability in America. Next season we will be taking risks but doing so with the ingenuity and love you have come to know from YOUR premier disability company."

Information about auditioning for *Miss Holmes*: [\(click here\)](#)

Internship information: [\(click here\)](#)

Volunteer information: [\(click here\)](#)

In addition, Phamaly has partnered with Access Gallery for the first time to create its season art. Thanks to artist Jareth J. Charles at Access Gallery for his creative vision.

Join Phamaly during its exciting 35<sup>th</sup> anniversary season in 2024!

Accessibility Services will be available for each production including captioning, audio description, American Sign Language interpretation, sensory friendly performances, tactile tours, Braille materials, sensory guides, wheelchair access, and inclusive hospitality discounts.

## About Phamaly Theatre Company

### Transforming Stories. Deconstructing Barriers. Elevating Disability.

Now in its 35<sup>th</sup> season, Phamaly Theatre Company is Denver's premier disability-affirmative theatre company, producing professional theatre exclusively casting artists with all nature of disabilities: physical, cognitive, intellectual, trauma-related, and emotional. Phamaly's mission is to be a creative home for theatre artists with disabilities; to model a disability-affirmative theatrical process; and to upend conventional narratives by transforming individuals, audiences, and the world.

For more information about Phamaly, please visit [www.phamaly.org](http://www.phamaly.org).

"Living Above the Line" is a transformative session designed to empower individuals with the tools and mindset needed to lead a life of accountability, intentionality, and positive action. By embracing a proactive approach and focusing on what you can control, you'll learn how to navigate challenges, achieve goals, and cultivate a fulfilling approach to life. Whether you're seeking to enhance your professional success, strengthen relationships, or simply lead a more fulfilling life, the principles of living above the line will empower you to take control of your choices and embrace the limitless potential within you.

Join PASCO and Emily Harvey for our first event of our 6-part resiliency series.

Are you ready to take charge  
of your life, your choices, and  
your outcomes?

PASCO

## RESILIENCY SERIES: LIVE ABOVE THE LINE

FRIDAY  
January 12th  
12:00pm – 1:00pm

"Living Above the Line" is a transformative session designed to empower individuals with the tools and mindset needed to lead a life of accountability, intentionality, and positive action.

PASCO  
9197 W 6th Ave, Ste 100  
Lakewood, CO 80226

Together We Thrive





*Sensationally*  
WIRED

A SLEEP COMPANY SUPPORTING NEURODIVERGENT INDIVIDUALS AND THEIR FAMILIES TO ACHIEVE BETTER SLEEP.

### NeuroSoothed Sleep Method Course

This course integrates relaxation and nervous system regulation approaches with conventional sleep treatments.

- Sleep theory and strategies to calm the nervous system
- Enhance sleep quality for you and your family
- Learn at your own pace and time!

### 50% OFF A SLEEP CONSULTING SESSION AFTER COURSE PURCHASE

### Sleep Consulting

We strive to provide effective solutions that respect each person's unique needs and preferences. Our goal is to support our clients to make positive changes that enhance their quality of life.

- Ages 5-11
- Ages 12-17
- Ages 18+

BOOK A FREE 15 MINUTE CONNECTION CALL



WWW.SENSIONALLYWIRED.COM



**Free Event!**

# POSSABILITIES EXPO

Connecting the disability community with recreation and resources.

## FOR PEOPLE OF ALL AGES AND ABILITIES

Drop In • Adaptive Sports Demos & Equipment • Fun Activities



Explore a wide variety of vendors, resources and services for different abilities, including therapeutic recreation, adaptive sports, health care, funding sources, transportation and more!

**Feb. 3, 2024 • 11 a.m.–2 p.m.**

Charles Whittlock Recreation Center  
1555 Dover St., Lakewood

**Lakewood.org/PossAbilitiesExpo**

## 2023-2024 Schedule

7 p.m. - 9 p.m.

Light of the World Catholic Church  
10306 W Bowles Avenue  
Littleton, CO 80127

September 22, 2023  
October 20, 2023  
October 27, 2023  
November 3, 2023  
November 17, 2023  
December 8, 2023  
December 15, 2023  
January 19, 2024  
January 26, 2024  
February 9, 2024  
February 23, 2024  
March 8, 2024  
March 22, 2024

April 5, 2024 - 50th Anniversary Party - LMH

April 19, 2024  
May 3, 2024  
May 17, 2024  
June 7, 2024  
June 14, 2024

CC - Community Center + LMH - Lux Mundi Hall



The Carron Coffee House program is provided at no cost to our patrons. If you would like to make a tax deductible donation to support the Coffee House program, you can mail your donation to the program coordinators as listed below.

Please make your check payable to Carron Coffee House Association.

Carron Coffee House Association  
c/o Luis and Monica Naegle  
4771 S Tabor Street  
Morrison, CO 80465-1935

No goods or services are provided in consideration in whole or in part for any contribution. Thank you!

## CONTACT US

Carron Coffee House Association  
c/o Luis and Monica Naegle  
Program Coordinators  
4771 S Tabor Street  
Morrison, CO 80465-1935  
Call/text: 720.985.0729  
Email: ccha.naegle@gmail.com

# CARRON COFFEE HOUSE ASSOCIATION

A Colorado non-profit Corporation providing recreational, social and spiritual interaction for adults with developmental disabilities.

## 2023-2024 Schedule



## OUR HISTORY

The Carron Coffee House Association is named for Cary Carron. In 1960, the pastor of Notre Dame Catholic church asked if Cary would be willing to teach religious education to a teen with developmental disabilities who was also subject to seizures. Cary, a registered nurse, felt she could work well with the teen.

This was only the beginning. As she came to know the handicapped community, she learned of their enormous needs, particularly the needs of developmentally disabled adults and their families. Few programs existed to help them.

Cary took on the difficult challenge to change that. She founded a Ministry to the Handicapped under the auspices of the Archdiocese of Denver.

ASK US ABOUT...

*Volunteering*

Cary recruited volunteers, brought together a professional staff, started a fund-raising program, connected with community resources and persuaded elected officials to recognize and help meet the needs of developmentally disabled adults.

One by one, Cary brought into being Coffee House, Respite Care for Families, Colleges for Living, a Group Home and Follow-along Services.

Coffee House began with the help of six seminarians at St. Thomas Seminary in 1974. In 1975, Cary approached the Knights of Columbus to seek their support for the Coffee House program.

The Knights of Columbus have generously provided financial support for Coffee House from their annual Tootsie Roll Drive. The Denver Metro Councils of the Knights of Columbus continue to provide financial support and transportation for the Coffee House program.



## TODAY

In August 2003, the Denver Metro Councils of the Knights of Columbus formed a 501(c)(3) non-profit corporation to continue the Coffee House program which is now known as the Carron Coffee House Association.

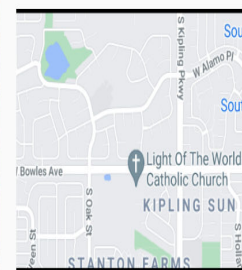
The Carron Coffee House program meets on Fridays, 7pm to 9pm from September through June at:

Light of the World Catholic Church  
10306 W Bowles Avenue  
Littleton, CO 80127

The program includes an hour of entertainment or activity, a light snack and concludes with a Catholic Mass. Attendees are not required to attend Mass.

For additional information about the Carron Coffee House program, please call the program coordinators:

Luis and Monica Naegle  
720-985-0729





# FYZICAL

## Pediatric Therapy

*No Waitlist!*

### Speech Therapy

- General Developmental Delays
- Receptive & Expressive Language
- Social Pragmatics
- Dyslexia Treatment
- Social Groups!
- Play skills
- Feeding/Swallowing
- So much more!

### Physical Therapy

- Gross motor concerns
- Balance/Vestibular Therapy
- Toe Walking
- Torticollis/Plagiocephaly
- Orthopedic Injuries
- Concussion Rehabilitation
- Aquatic Therapy
- Hand Therapy
- Gross Motor Groups!

### Occupational Therapy

- Self-Regulation/Social-Emotional Development
- Trauma-Informed Therapy
- Behavioral Treatment + Anxiety
- Fine Motor Skill Development
- Sensory Regulation
- Activities of Daily Living
- Social Skills
- Executive Functioning
- Picky Eating
- Social Groups!
- Aquatic Therapy



@fyzical.castlerock.parker  
@fyzical.castlerock.parker

Expert therapists who work with families to improve all aspects of their child's daily life functioning.

*Schedule an Evaluation Today!!*

#### North Parker

19284 Cottonwood Dr.  
Suite 203  
Parker, CO 80138  
P: (720) 788-7365  
F: (720) 294-1426

#### Castle Rock

2 Oakwood Park Plaza,  
Suite 200  
Castle Rock, CO 80104  
P: (720) 788-7365  
F: (720) 294-0284

#### South Parker

12919 Stroth Ranch Ct.  
Unit F  
Parker, CO 80134  
P: (720) 788-7365  
F: (803) 840-1777

# Avery's Light

Our goal at Avery's Light is to bring awareness by providing resources and opportunities to the special needs community. We have sponsored everything from additional therapies such as Hippo therapy and music therapy, to adaptive equipment like crash pads, sensory head phones, to weighted blankets and so much more. Avery's light believes that our special needs community should be given the same opportunities that you and I have every day, from sending kids to summer camp to providing the above resources our goal is to bring the resources need to help our special needs community thrive!

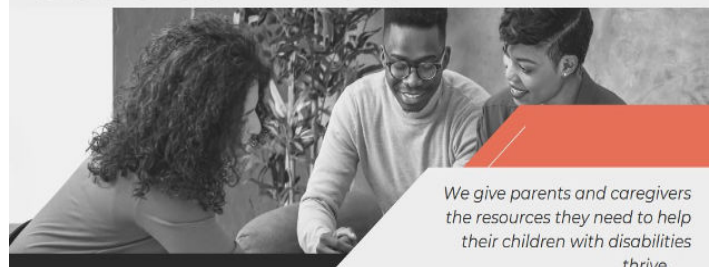


7896 Blackwood Dr.  
Windsor, CO 80550

(720)352-3129

give@averyslight.org

# Show+Tell



We give parents and caregivers the resources they need to help their children with disabilities thrive.

## FREE PARENT ADVISING

## WE OFFER



### INTAKE

One of our parent educators will speak with you one on one and curate a list of community resources for you and your family specifically.

### CONTACT US NOW



+303-632-6840



ellen@weshowandtell.org



### COMMUNICATION

Our parent educators will answer any questions regarding your families IEP and 504 Plans and assist with communication to your school/district.

www.weshowandtell.org

IT TAKES A VILLAGE

# Spring Break Day Camp

PerformAbility is hosting a spring break day camp.

When: March 18th - 20th

Time: 9:00 to 11:30 am

Where: Starstruck Academy of Dance

ALL ages and abilities welcome.

Camp includes; lots of dance, games, friendship bracelets and a snack provided daily.

Price- \$50.00 per day or \$125.00 total.

Message Melanie to register- 720-934-3437

**PerformAbility**  
performwithus.growwithus





The goal of **Drive with Confidence** is to improve public safety by assisting families to determine if someone is safe to

drive and help through the transition of driving cessation as needed. My specialty is older drivers with neurological diagnoses (dementia, Alzheimer's, stroke, Parkinson's Disease, Multiple Sclerosis). I also provide adaptive driving options—use of hand controls, a left foot accelerator or steering knob.

I travel to your home to complete both a clinical and behind the wheel assessment. The clinical assesses: vision, cognition, sensation, physical function, perceptual abilities and behavioral control in addition to a review of medical and driving history as well as current medications and family concerns.

The behind the wheel assessment is completed in my vehicle because I have an instructor brake and a rearview mirror. I assess: basic vehicle operation, adherence to rules of the road, visual assimilation, self-awareness, emotional regulation/insight, judgment, distractibility, mental/physical fatigue and anticipation of other drivers.

I do require a prescription from an MD, DO or PA in addition to medical history and medications. This service is not covered by insurance. I do also work with your physician to ensure that the proper paperwork is completed to comply with the rules and laws of Colorado.

## SAVE THE DATE!

**The 20th Annual  
Collaborative Health Expo**

**March 30, 2024  
9am - 2pm**

Join us at the **Double Tree Hotel Grand Ballroom**  
3203 Quebec St, Denver, CO 80207

For more information contact:  
info@caahealth.org  
303.355.3423



Adaptive  Mobility

## INSPIRING INDEPENDENCE, TOGETHER

- Adaptive Mobility is a disabled veteran and woman owned small local business
- Medicaid and VA Approved Installer
- Serving Denver, Colorado Springs and Pueblo
- Offering wheelchair ramps, ADA shower conversions, grab bars, handrails and more!



Certified  
Aging-in-Place  
Specialist

**719-204-5008**  
www.adaptcolorado.com

GET A QUOTE

6385 Corporate Drive  
Ste. 201  
Colorado Springs, CO 80919



### Front Range Pediatric Therapies

Front Range Pediatric Therapies is a home health agency that is passionate about providing high-quality and caring service in a child's natural environment. In practice for over 15 years, our therapists are experts at integrating evidence-based practices with play in order to aid in your child's growth and development.

### WHY CHOOSE FRPT?

- ✓ We come to you!
- ✓ Accept Medicaid, Tricare, and private insurances
- ✓ Collaboration with all members of child's care team
- ✓ Well respected in the community
- ✓ Extremely low therapist turnover

**Proudly providing speech,  
occupational, & feeding therapy to  
kids 0-18 throughout the front range**

Call us today to get your  
services started for your child!

888-701-9216



SCAN HERE

### WHEN TO REACH OUT

#### to a Speech Language Pathologist:

- Struggles to imitate sounds/words
- Uses only a few or poor quality sounds
- Slow to understand new words
- Cognitive changes such as poor memory or problem-solving skills
- Difficulty communicating basic needs
- Not combining words by 18 months
- Stops saying sounds or words he or she had previously mastered
- Difficulty with or is not responding to directions, questions, or conversations with others
- Not understood by others
- Difficulty making and keeping friends
- Stuttering or other disfluencies in speech
- Difficulty biting, chewing, or swallowing foods or liquids

#### to an Occupational Therapist:

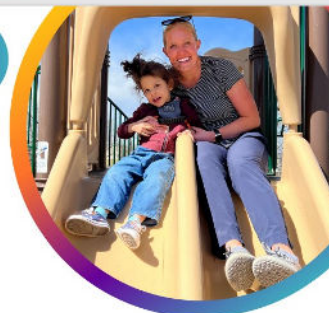
- Difficulty in pre-writing or writing skills
- Difficulty with learning skills such as buttoning and shoe tying
- Lack of coordination (fine or gross motor)
- Heightened reactions to or lack of awareness of sensory input such as touch, sound, movement
- Lacks variety in foods
- Craves excessive movement or physical contact
- Difficulty attending to a task
- Poor organizational skills
- Poor problem solving abilities
- Poor self-regulation
- Frequent, prolonged, or intense tantrums
- Difficulty with transitions, including transition to sleep
- Difficulty with self-help skills such as dressing, grooming, toileting

### AREAS WE SERVE

- ✓ Greater Colorado Springs Area
- ✓ Denver Metro Area
- ✓ Daycares/Preschools
- ✓ ABA centers with permission from the center
- ✓ After school programs
- ✓ Home or community location of your choice

#### Contact FRPT:

888-701-9216  
contact@fronrangekids.com  
www.fronrangekids.com  
@FrontRangePediatricTherapies  
@FrontRangePediatricTherapies







**REGISTER TODAY**  
**SFN Mastermind Group Class of 2024**  
**ZOOM Kickoff Event**  
**Saturday, January 6, 2024**  
**9:00am Central Time (U.S.)**

#### WHAT:

**SFN Mastermind Group dads meet weekly by Zoom for 75 minutes.**

#### Each meeting:

- starts with a round of wins from the past week,
- includes a discussion of the current book (6 per year) being reviewed,
- has two Dad-In-The-Middle sessions for dads to share a challenge, and
- ends with a recap and look at the week ahead.

#### WHO:

**SFN Mastermind Group Dads are those:**

- seeking meaningful friendships with like-minded dads,
- willing to invest their time and make a financial commitment,
- looking for a safe place to be open and authentic, and
- who realize seeking advice is a strength, not a weakness.

#### WHY:

**SFN Mastermind Group Dads benefit by:**

- realizing they are NOT alone,
- having better relationships with their spouse,
- developing improved understandings of their child(ren),
- tapping into the experience and wisdom of others,
- getting weekly encouragement from like-minded dads, and
- creating a pathway to become the best version of themselves

**If you or someone you know is interested in registering or learning more about the SFN Mastermind Group, please go to [www.21stCenturyDads.org](http://www.21stCenturyDads.org)**

**ROCKY MOUNTAIN  
 MS CENTER**  
*— the answers begin here —*  
**Educational Webinar**

### Webinar: Cognitive Functioning in MS

This discussion will focus on the onset, prevalence, and nature of cognitive changes often observed in MS, as well as their potential impact on occupational and daily functioning. The cognitive effects of additional non-neurologic factors common in MS (e.g., fatigue, pain, depression, etc.) will also be addressed.

Ask questions ahead of time at the prompt after you register, or by emailing us at [education@mscenter.org](mailto:education@mscenter.org).

All registrants will receive an email after the event with a link to a video recording of the Webinar.

#### ABOUT THE PRESENTER

Dr. Brian Hoyt is a board-certified clinical neuropsychologist and the Head of the Division of Neuropsychology in the Department of Neurosurgery at the University of Colorado School of Medicine. After earning his Ph.D. at the University of Houston, he completed a post-doctoral fellowship in clinical neuropsychology at National Jewish Health in Denver, and then joined the faculty there until he established the University of Colorado Hospital Neuropsychology Clinic in 2011.

**Live via Zoom!**  
**Wednesday, January 10,**  
**2024**  
**2:30 to 3:30 p.m. MT**

**PICAYUNE**



The east African nation of Rwanda sits right at the equator. The sun sets every evening at 6 pm and it is dark until 6 am the following morning. To provide light to do any task people must rely on candles and kerosene lamps which are dangerous and hard on the eyes. They also cost money. Will you help us provide solar lights to help improve life for families in Rwanda?

STUDENTS return from classes and then must go out to collect water or firewood for the family and help with preparing meals. By the time they eat and have time to study it is dark. Where solar lights have been introduced children's academic progress has gone up significantly.

MEN and WOMEN who work in their fields all day can work on handicrafts in the evening if they have a source of light, increasing their household income.

ELDERLY WOMEN who venture out at night on rocky ground to use the latrine use the lights to ensure a safe journey with no falls.

**SOLAR LIGHTS for RWANDA - \$15**



Our team will be travelling to Rwanda January 18 – February 2, 2024. [Love With Actions](http://LoveWithActions.org) has requested as many solar lights as we can bring. Would you consider donating to bring light to as many homes as possible? Each light is \$15. Checks can be made to St. James Presbyterian Church with Rwanda lights on the memo line. You will receive a receipt at the



### FREE Training Guardianship and Less Restrictive Options

#### Who is this training for?

Middle School or High School Students

Parents or caregivers interested in learning more about guardianship and what that means.

Parents or caregivers interested in other options and what they mean.

Anyone interested in how to begin this process.

**Topic:** Guardianship and Less Restrictive Options presented by The Arc of Pikes Peak

**Date:** Wednesday, January 24<sup>th</sup>, 2024

**Time:** 5:30-8PM

**Place:** The Arc of Pikes Peak  
 10 North Meade Ave  
 Colorado Springs

#### Registration:

<https://www.tfaforms.com/5100152>



This training is designed to give you an understanding of the differences between guardianship and less restrictive options and how to begin this process.

**\*\*Light snacks will be provided\*\***

**Colorado  
 Springs**

**Co-Sponsored By:**



PEAK Parent Center  
 719-531-9400

Email:  
[pchristy@peakparent.org](mailto:pchristy@peakparent.org)  
[www.peakparent.org](http://www.peakparent.org)



## How Sick is Too Sick Guide

Early reporting leads to shorter outbreaks with fewer cases.  
If unsure if a case needs to be reported, reach out to JCPH for guidance.

Condition	Reporting Criteria	Exclusion Period
<b>COVID-19</b>	Report all known cases (staff and students) via the REDCap reporting survey.	Exclude from facility for five days from symptom onset (date of test if asymptomatic). Recommendation to wear face covering on days 6-10.
<b>Influenza RSV Croup</b>	Clusters reported to PHDC* email.	Exclude until fever-free for 24-hours, without the use of fever reducing medication, AND other symptoms are improving or have resolved.
<b>Pertussis</b>	Report individual case to JCPH. Report should be to PHDC* email.	Exclude until no longer infectious (24 hours after the fifth dose of antibiotic or waiting until 21-days after cough onset).
<b>GI</b>	Clusters reported to PHDC* email.	<b>Unspecified GI illness:</b> Exclude until symptom free for 24-hours. <b>Known Pathogen:</b> Contact JCPH for exclusion criteria. <b>Norovirus/Suspect Norovirus:</b> Exclude until symptom free for 48-hours.
<b>Strep Throat</b>	Clusters reported to PHDC* email.	Exclude while symptomatic. Return when asymptomatic, or 12-hours after starting antibiotics.
<b>Hand Foot and Mouth Disease</b>	Clusters reported to PHDC* email.	Exclude if: has a fever, or is drooling uncontrollably with mouth sores, or is unable to participate in activities/staff determine they cannot care for them without impacting the health and safety of others.

PHDC inbox: [Public\\_HealthDiseaseControl@jeffco.us](mailto:Public_HealthDiseaseControl@jeffco.us)  
Clusters can be as small as two people and must be reported, even if the illness itself is not reportable.  
For a full list of reportable conditions and reporting time frames: <https://cdphe.colorado.gov/report-a-disease>.

**JEFFERSON**  
COUNTY  
Public Health

## BE PREPARED FOR A WINTER STORM

Winter storms create a higher risk of car accidents, hypothermia, frostbite, carbon monoxide poisoning, and heart attacks from overexertion.

FEMA  
FEMA V-1014/June 2018

Winter storms and blizzards can bring extreme cold, freezing rain, snow, ice, and high winds.

**Greater risk**

Can last a few hours or several days

Can knock out heat, power, and communication services

### IF YOU ARE UNDER A WINTER STORM WARNING, FIND SHELTER RIGHT AWAY

**Stay off roads.**

**Stay indoors and dress warmly.**

**Prepare for power outages.**

**Use generators outside only.**

**Listen for emergency information and alerts.**

**Look for signs of hypothermia and frostbite.**

**Check on neighbors.**

**PSD**  
Future Ready

**POUDRE SCHOOL DISTRICT**  
Transition Pathways

## COMMUNITY TRANSITION RESOURCE FAIR

**Start planning now for life after high school!**

Come to The Future Ready Center to learn more about local community resources for:

- Self-Determination
- Community Navigation
- Post-Secondary Options
- Digital Literacy
- Competitive Employment
- Health Management

Northern  
Colorado

For students utilizing IEPs in Middle School through Transition Pathways, families and teachers. Dinner will be provided.

# WHEN

# WHERE

**WEDNESDAY, JANUARY 24TH**  
**6 - 8:00 PM**

**THE FUTURE READY CENTER**  
215 E FOOTHILLS PKWY SUITE 510  
FORT COLLINS CO 80525

**REGISTER FOR EVENT AND REQUEST ACCOMMODATIONS/INTERPRETERS...**

**[WWW.PSDFUTUREREADY.ORG/EVENTS](http://WWW.PSDFUTUREREADY.ORG/EVENTS)**

## HOW TO STAY SAFE WHEN A WINTER STORM THREATENS

**Prepare NOW**

**Know your area's risk for winter storms.** Extreme winter weather can leave communities without utilities or other services for long periods of time.

**Prepare your home to keep out the cold with insulation, caulking, and weather stripping.** Learn how to keep pipes from freezing. Install and test smoke alarms and carbon monoxide detectors with battery backups.

**Pay attention to weather reports and warnings of freezing weather and winter storms.** Sign up for your community's warning system, The Emergency Alert System (EAS) and National Oceanic and Atmospheric Administration (NOAA) Weather Radio also provide emergency alerts.

**Gather supplies in case you need to stay home for several days without power.** Keep in mind each person's specific needs, including medication. Do not forget the needs of pets and flashlights.

**Create an emergency supply kit for your car.** Include jumper cables, sand, a flashlight, warm clothes, blankets, bottled water, and non-perishable snacks. Keep the gas tank full.

**Learn the signs of and basic treatments for frostbite and hypothermia.** For more information, visit: [www.cdc.gov/disasters/winter/staysafe/index.html](http://www.cdc.gov/disasters/winter/staysafe/index.html).

**Survive DURING**

**Stay off roads if at all possible.** If trapped in your car, stay inside.

**Limit your time outside.** If you need to go outside, wear layers of warm clothing. Watch for signs of frostbite and hypothermia.

**Avoid carbon monoxide poisoning.** Only use generators and grills outdoors and away from windows. Never heat your home with a gas stove top or oven.

**Reduce the risk of a heart attack.** Avoid overexertion when shoveling snow.

**Watch for signs of frostbite and hypothermia and begin treatment right away.**

**Check on neighbors.** Older adults and young children are more at risk in extreme cold.

**Recognize +RESPOND**

**Frostbite** causes loss of feeling and color around the face, fingers, and toes.

- **Signs:** Numbness, white or grayish-yellow skin, and firm or waxy skin.
- **Actions:** Go to a warm room. Soak in warm water. Use body heat to warm. Do not massage or use a heating pad.

**Hypothermia** is an unusually low body temperature. A temperature below 95 degrees is an emergency.

- **Signs:** Shivering, exhaustion, confusion, fumbling hands, memory loss, slurred speech, and drowsiness.
- **Actions:** Go to a warm room. Warm the center of the body first—chest, neck, head, and groin. Keep dry and wrapped up in warm blankets, including the head and neck.

**Take an Active Role in Your Safety**

Go to [Ready.gov](http://Ready.gov) and search for **winter storm**. Download the **FEMA** app to get more information about preparing for a winter storm.



**PERSONAL ASSISTANCE SERVICES OF COLORADO**  
9197 West 6th Avenue  
Suite 1000  
Lakewood, Colorado 80215  
(303)233-3122

## 2024 PASCO Holidays

Starting next year, we are excited to be celebrating Juneteenth as one of our 10 paid holidays! Thanks to your responses and feedback from our holiday survey sent last month, Juneteenth is now a PASCO paid holiday in lieu of President's Day.

Below is the updated list of our paid holidays at PASCO for 2024.

- Monday, January 1st - New Year's Day
- Monday, January 15th - Martin Luther King Day
- Monday, May 27th - Memorial Day
- Wednesday, June 19th - Juneteenth
- Thursday, July 4th - Independence Day
- Monday, September 2nd - Labor Day
- Thursday, November 28th - Thanksgiving
- Friday, November 29th - Day after Thanksgiving
- Tuesday, December 24th - Christmas Eve
- Wednesday, December 25th - Christmas Day

**WHAT YOU SHARE  
IS UP TO YOU.  
WE'RE HERE TO  
LISTEN.**



**988  
SUICIDE  
& CRISIS  
LIFELINE**

Call, text, or chat 988 for free, confidential support.

**P**ASCO (Personal Assistance Services of Colorado) is certified under Medicare, Medicaid, and the Medicaid Home and Community Based Services (HCBS) program to provide personal assistance services to children and adults with severe disabilities. PASCO was incorporated in 1991 and began providing services to persons with disabilities on January 1, 1992. PASCO's mission is to provide personal assistance services, promoting independence and safety to clients and/or their families. PASCO continuously strives for client and employee satisfaction. The foundation of PASCO is CHOICE. To the maximum extent possible, PASCO works to accommodate the needs and wants of each client.

## THINK+change<sup>TM</sup> STORY TELLING TALKS SERIES

### HOUSING CHALLENGES AND PEOPLE WITH DEVELOPMENTAL DISABILITIES

Made Possible Through Support from



Next Steps  
Neurodiversity Resource Fair

**Connect.  
Explore.  
Celebrate.  
Empower.**

**Boulder County Fairgrounds** (9595 Nelson Road Longmont, CO 80501)

10:00am to 3:00pm

Free—No cost for attendees!

[www.nextstepsresourcefair.com/](http://www.nextstepsresourcefair.com/)

The Next Steps Neurodiversity Resource Fair is a free community event dedicated to celebrating neurodiversity and providing resources and support for individuals of all ages who have autism, ADHD, dyslexia, and more.